



CANCER CARE & HAEMATOLOGY FUND



CANCER CARE & HAEMATOLOGY FUND

SUPPORTING  
BUCKS FOR  
MORE THAN  
30 YEARS



DONATE TO  
FEEL GREAT



HERE FOR CANCER  
AND HAEMATOLOGY  
PATIENTS



## OUR WORK COULDN'T HAPPEN WITHOUT YOU

### TOGETHER WE MAKE THE DIFFERENCE

All funds from your donations and the efforts of our incredible fundraisers are gratefully received by CCHF and go towards helping cancer and haematology patients in Buckinghamshire.

We achieve this through the generous giving of time by all our Trustees and volunteers. So, you can rest assured funds raised will be used to benefit the support and comfort of patients.



## LOOKING TO THE FUTURE

### UNDERSTANDING EVER EVOLVING NEEDS

Thanks to you we have funded exceptional treatment and wellbeing spaces for patients at NHS Trust facilities in Buckinghamshire, specifically the CCHU at Stoke Mandeville Hospital.

Our board of experienced and passionate Trustees are continually looking at where our help is needed most.

We are in regular discussions with the staff in CCHU and the NHS Trust about how best to support both staff and patients, particularly as the services recover from the impact of Covid 19 in 2020 and 2021.

## DONATION FORM

As well as donating online you can also complete the form below, tear it off and send it, with a cheque, to the Cancer Care & Haematology Fund, C/O Cancer Care & Haematology Unit, Stoke Mandeville Hospital, Aylesbury, Buckinghamshire, HP21 8AL.

Remember, if you are a UK tax payer that Gift Aid increases your donation by 25% - **with no cost to yourself!**

Name  Address

Postcode

I enclose a donation of £

Please treat this, and all subsequent donations I may make to the Cancer Care & Haematology Fund as a Gift Aid donation (tick box if applicable) ☐

Signature

Date

We will not give your information to any other organisation.  
If you wish to receive occasional newsletters or other information on the Cancer Care & Haematology Fund, please tick this box ☐

## YOU ARE AMAZING

### FUNDRAISING TO BRING COMFORT TO MANY

CCHF is a Buckinghamshire based charity dedicated to raising funds to support patients diagnosed with cancer and haematology related illnesses.

Your incredible fund raising efforts enable us to fund additional comforts and support for patients receiving treatment and care via Buckinghamshire Healthcare NHS Trust's Cancer Care & Haematology Unit at Stoke Mandeville Hospital and the Sunrise Unit at Wycombe Hospital.

#### How do we help?

- By funding specialist clinical equipment
- Environmental enhancements to treatment centres
- By funding staff
- A Wigs for Patients service



Donate at [www.cchf.org.uk/donate](http://www.cchf.org.uk/donate)

 Registered with  
**FUNDRAISING  
REGULATOR**  
Registered Charity Number 1001358

Visit our web site  
[www.cchf.org.uk](http://www.cchf.org.uk)  
for more information







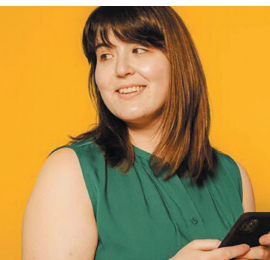
CANCER CARE & HAEMATOLOGY FUND

COLLECTIVE  
PASSION  
SINGULAR  
VISION



CANCER CARE & HAEMATOLOGY FUND

SUPPORT  
CCHF IN  
YOUR OWN  
WAY



## STAFF POSTS

### EXPERT PATIENT CARE MAKES THE DIFFERENCE

The CCHF's major continuing investment is in expert cancer care nurses. These posts are in addition to the NHS-funded establishment and provide a level of skill and expertise that goes far beyond the standard requirements, and makes such a difference to patients.

CCHF provide financial support for training and development, sponsors salaries of specialist staff and contributes to research funds.

Your fundraising and donations help us ensure that many patients continue to benefit from our investment.

## CLINICAL EQUIPMENT

### CREATING COMFORT DURING TREATMENT

Having the right equipment to enhance comfort levels for patients is always very important to us and the units we support. Thanks to all those who generously donated through the CCHF, we were able to commit £52,000 for the purchase of the latest technology scalp cooling machines which are used by some patients to minimise hair loss during chemotherapy.

We have previously contributed towards monitored beds for gravely ill patients on an inpatient ward, chemotherapy pumps, and scalp coolers to help prevent hair loss.



## ENHANCING ENVIRONMENTS

### DEVELOPING AREAS THAT ENCOURAGE CALM

The Cancer Care and Haematology Fund are acutely aware of how, not just the treatment areas, but the surrounding environments can impact patients and their families and friends during treatment.

From something simple such as new waiting area chairs to funding the extensive garden renovations at CCHU, we are here to help. By transforming the underused outdoor space we now have created a tranquil, garden environment for patients and their families to sit and relax.

Your donations saw this dream realised, helped by individuals and businesses who volunteered and supported us in completing this beautiful garden.

## WIGS FOR PATIENTS

### RESPECTING DIGNITY, BUILDING CONFIDENCE

For many patients facing chemotherapy, the news that they may lose their hair causes great distress. Since 2011, your fundraising has enabled CCHF to ensure that Wigs for Patients service is free for cancer patients at Stoke Mandeville and Wycombe hospitals.



## HOLD AN EVENT

We have been grateful to all who have put an occasion together to raise awareness of and money for this charity. These include, coffee mornings, cake sales, dinner and dance and other special events like Tramps Hairdressers production of 'Ladies and the Tramps'.

We like to hear about what is planned in advance so we can provide information and advertising about these.

## SPONSORED ACTIVITIES

CCHF has benefitted from sponsored runs, including the London Marathon, from sponsored walks around the Aylesbury Ring and climbs on Everest, students cycling from London to Istanbul, and a sponsored football game at MK Dons.

Let us know what you are thinking of doing.



## PLANNING TO FUNDRAISE

The simplest option is to set up a donation page and you can make it clear who you are, what you are doing, when and why, and the money donated will be automatically transferred to CCHF. Gift Aid can be claimed from donors who pay UK tax and 25% more passed on to CCHF.

Please tell us what you are planning. Where appropriate, we will share details of what you are planning through this website and our social media accounts. Reach us at: [contact@cchf.org.uk](mailto:contact@cchf.org.uk)

GET IN TOUCH WITH CCHF

Email: [contact@cchf.org.uk](mailto:contact@cchf.org.uk)



/i/flow/login



/CCHFfund/



/company/cancer-care-haematology-fund



/thecchfund/

Cancer Care & Haematology Fund, C/O Cancer Care & Haematology Unit, Stoke Mandeville Hospital, Aylesbury, Buckinghamshire, HP21 8AL.



Visit our web site  
**[www.cchf.org.uk](http://www.cchf.org.uk)**  
for more information